

# CHISON

Value Beyond Imaging



## QBit9 vet

Smart Ultrasound

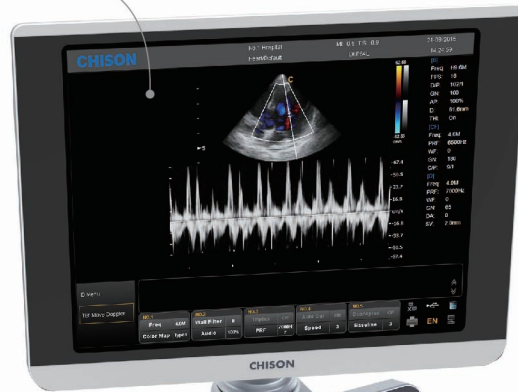






# Ergonomics Ergonomics

19" LED foldable  
up & down for  $0^{\circ} \sim 90^{\circ}$



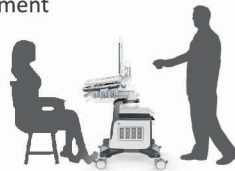
The LED screen can  
be rotated left and right  $0^{\circ} \sim 90^{\circ}$   
to allow different viewing  
angles of patients and operators

Stereo audio system



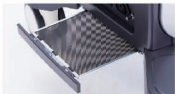
simplified keyboards  
with backlit keys.

Floating keyboard with  
left/right rotation  $0^{\circ} \sim 45^{\circ}$ ,  
up/down height adjustment  
 $0\text{cm} \sim 15\text{cm}$



## Hero Kit

Innovation Design for  
easy maintain. Do the  
maintain without any  
training!



Removable dust filter.

Built in battery-80min  
(option)



Print paper face to the front,  
for easy access.

Four wheels with locks

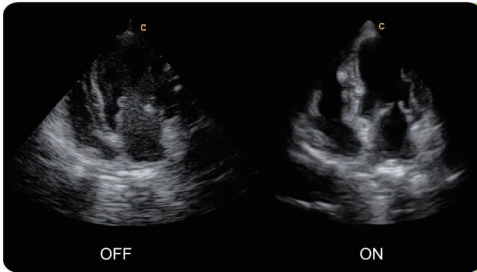


35.6 cm  
Small foot print

USB ports



# Advanced Technologies

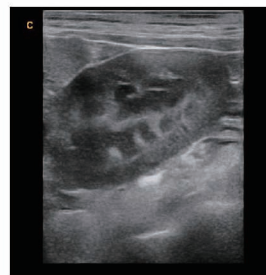


## FHI

Better than traditional tissue harmonic, using different transmission and receiving methods for different body sized animals, maximize the resolution without losing penetration.

## X-contrast

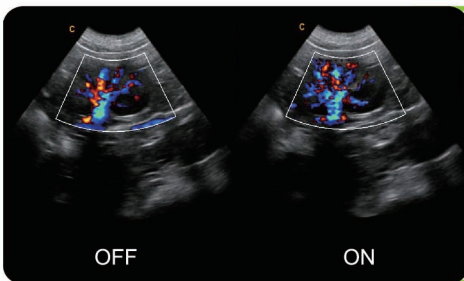
Activated by one-key, automatically detect different tissues, greatly enhance the contrast resolution of different tissue by improving the signal-to-noise ratio.



Normal



Enhance

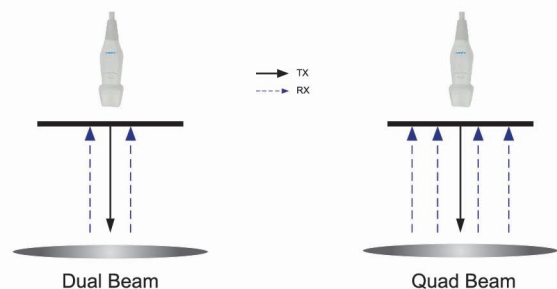


## Q-flow

Maximize the color sensitivity by automatically distinguish different tissues and detecting its color flow accordingly, especially good for low velocity flow and tiny vessels.

## Q-beam

Different from traditional dual phased digital former ,using Quad-Beam Former to improve the processing speed, greatly improve the frame rate.



## Performance breakthrough

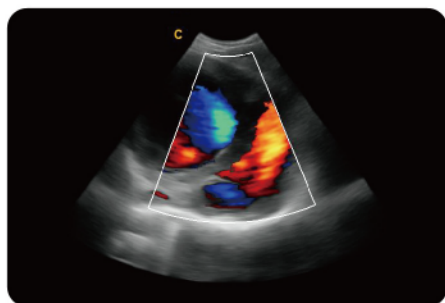
**Excellent performance with proprietary function:**

B/BC mode ; Triplex; Quadplex ; PW auto-trace in real time ; Super needle ; 2D steer

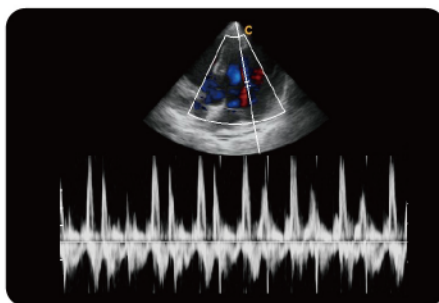
**18MHZ high frequency linear probe :**

Provide superb image for superficial tissue & small pets .

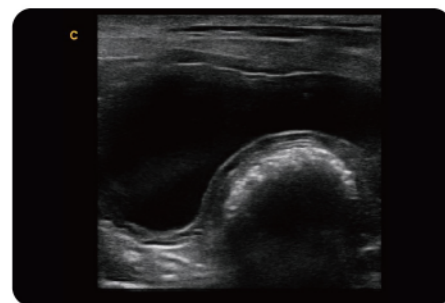
## Premium Image Quality



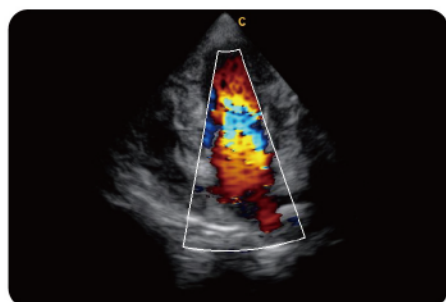
Canine Cardiac,C Mode



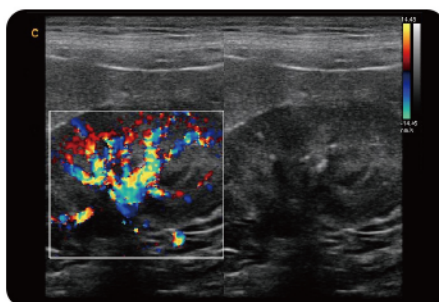
Canine Cardiac,D Mode



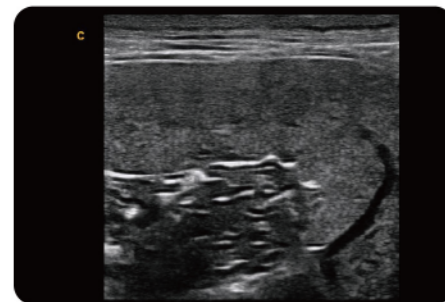
Canine Bladder,B Mode



Canine Cardiac,C Mode



Canine Kidney,B/BC Mode



Canine spleen,B Mode

## Wide Range of Probe Selection



2.0MHz-6.8MHz Convex  
D3C60L



4.0MHz-15.0MHz Linear  
D7L40L



7.0MHz-18.0MHz(with FHI) Linear  
D12L40L



1.0MHz-5.3MHz Phased array  
D3P64L



2.0MHz-6.8MHz Micro-Convex  
D3C20L



4.0MHz-10.7MHz Micro-Convex  
D5C20L



4.0MHz-12.0MHz Micro-Convex  
D6C15L



2.0MHz-8.0MHz Phased array  
D6P64L



4.0MHz-10.0MHz Linear Rectal  
D7L50L-A

## CHISON Medical Technologies Co., Ltd.

### Sales & Service Contact Address:

No.9, Xinhuihuan Road, Xinwu District, Wuxi, Jiangsu, China 214028

**T E L** : 0086-510-85310593 / 85310937

**F A X** : 0086-510-85310726

**E M A I L** : export@chison.com.cn

We reserve the right to make changes to this catalogue without prior notice.  
Please contact our local dealer for the latest information.