

CHISON
Value Beyond Imaging

SonoTouch 30

NEW



Get in **Touch** with
The Future of **Ultrasound**

Approved by FDA & CE

Ready to GO

GoLED

- The entire button-free screen is touch-driven
- Waterproof front panel is easy to sanitize

GoMeasure

- Make measurements with your fingers only
- Measurement accuracy is under 1 mm

GoHub

- Quick copy, paste and transfer of images & reports
- Easy import and export of patient information or case studies
- USB, DICOM 3.0, (Option)

GoPower

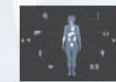
- Quick boot in 30 seconds
- Car charger available
- Instant shutdown in 2 seconds

GoTune



- Adjust image settings like TGC, focus and depth with intuitive touch-driven instructions

GoApp



- Select your application with visual icons

GoFlex

- Adjustable tilt angle
- Make your measurement easier
- Also functions as a convertible handle for carrying

GoClip

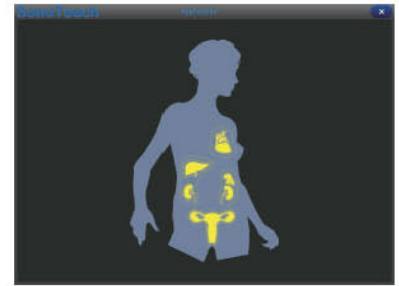
- Quick save and recall
- Plays CINE clips forward or backward



PROFESSIONAL Clinical Application UI

The dedicated icon-based presets for major MSK / Anaesthesia/ Vascular positions will help doctors acquire optimal images in an easier, quicker, and more intuitive way.

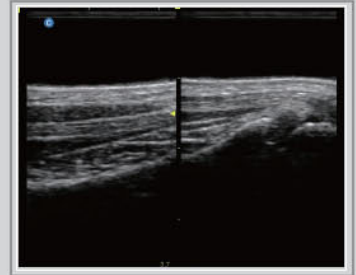
It uses the latest Super Tissue technology on the 11MHz Linear probe to enhance the near field image within 2.5 cm depth which is the focal region of most Point of care applications.



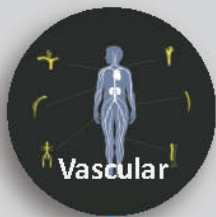
Subscapularis Tendon, B Mode



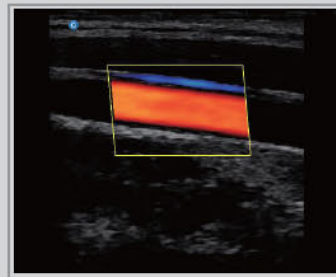
Patella Tendon Tibian Insertion Part, B Mode



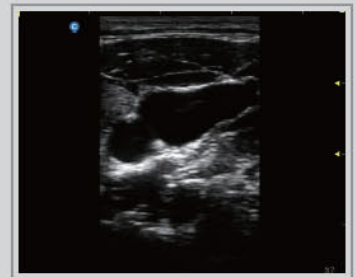
Palmaris Longus Tendon, B Mode



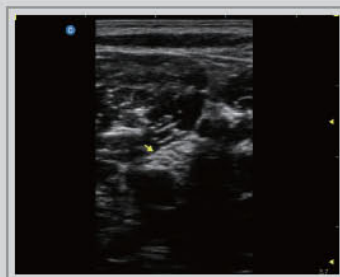
Liver, B Mode



Carotid, C Mode



Central Venous Access, B Mode



Popliteal Sciatic Nerve, B Mode



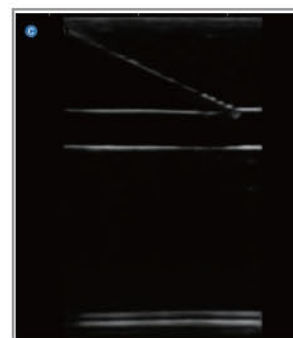
Ulnar Artery, PW Mode



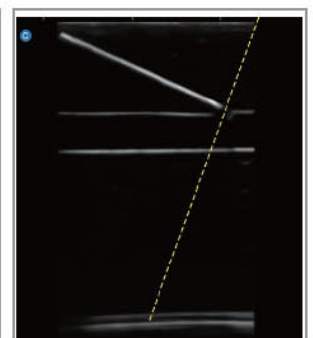
Kidney, B Mode

Super Needle (Option)

Super Needle (Option) is our needle enhancement technology supporting angle adjustment up to ± 20 degrees. It enhances the needle's appearance for a more confident approach to anatomical targets.



Without Super Needle
Needle is Not clear



With Super Needle
Needle is Better Visualized



Suitcase(CS-1)



Trolley(TR-1)
Tri-connectors

WWW.CHISON.COM

Standard Configuration

Main unit, 10.4" Touch screen, 1 probe connector,
3 USB ports, VGA port, LAN port

Options



5MHz-10MHz Linear
L7M



5MHz-11MHz Linear
L7S



2.5MHz-5MHz Convex
C3



2.5MHz-4MHz Micro-Convex
MC3



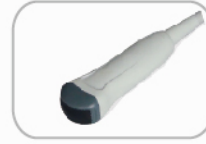
2.5MHz-4MHz Phased Array
P3



4MHz-7.5MHz Transvaginal
V6



5MHz-10MHz Trans-Rectal
R7

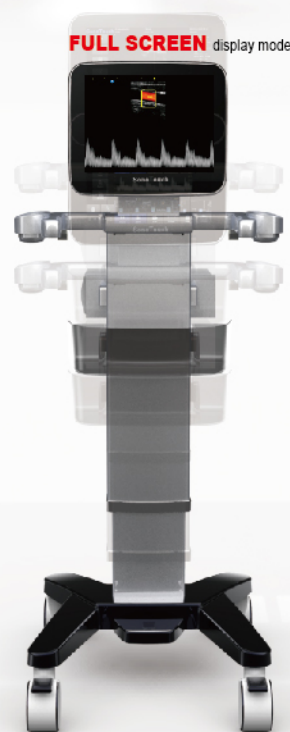


4MHz-8MHz Micro-Convex
MC6



4.5MHz-7MHz Micro-Convex
MC5V

- Biopsy kit is available (probe dependent)
- Video printer, PC printer
- Super Needle
- Trolley(TR-1)
- DICOM3.0
- Tri-connectors
- Suitcase(CS-1)



(Height adjustable)

CHISON Medical Technologies Co., Ltd.

Sales & Service Contact Address:

No.9, Xinhuihuan Road, Xinwu District, Wuxi, Jiangsu, China 214028

TEL: 0086-510-85310593 / 85310937

FAX: 0086-510-85310726

EMAIL: export@chison.com.cn

EST 091817

We reserve the right to make changes to this catalogue without Prior notice