



# Viola DBT

Unique Digital Mammography  
with Tomosynthesis

[www.gmmspa.com](http://www.gmmspa.com)



# VIOLA DBT ALL-IN-ONE SYSTEM

ERGONOMICS AND CUTTING-EDGE TECHNOLOGY



## VIOLA DBT ALL-IN-ONE & VERSATILITY

- FFDM 2D
- Tomosynthesis 3D
- Synthetic image (G-VIEW)
- Unique Biopsy with Tomosynthesis or Stereo with the patient in prone position
- Dual Energy - Contrast Enhanced Spectral Mammography (CESM)

# EXCELLENCE IN TECHNOLOGY & IMAGE QUALITY

- AWS: Intuitive, touchscreen controls and complete of a dedicated management software for breast care
- Highest clinical quality thanks to a number of cutting-edge technologies:
  - Tomosynthesis Step & Shoot
  - Original Pixels: No Binning (85 µm)
  - Iterative reconstruction software dedicated to Tomosynthesis
- X-Ray Assembly: special X-Ray tube air-cooled by aluminium alloy heat sinks
- Innovative selenium detector



## » DUAL ENERGY

### CONTRAST ENHANCED SPECTRAL MAMMOGRAPHY (CESM)

- Digital mammography with dual-energy in combination with an injection of iodized contrast medium
- A traditional 2D positioning and a single compression: two images are acquired, one low-energy and the other high-energy. The image subtraction quickly generates one clinical image to reveal tumor angiogenesis

## » ITERATIVE RECONSTRUCTION SOFTWARE

Designed to produce images with the least number of artifacts: maximum speed and accuracy

## » NO BINNING

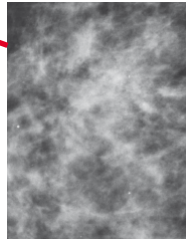
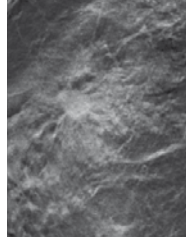
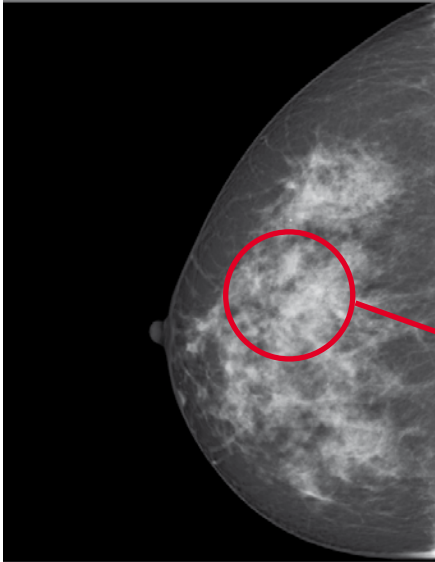
Maximum image resolution without binning: better visualization of microcalcifications and structures

## » STEP & SHOOT

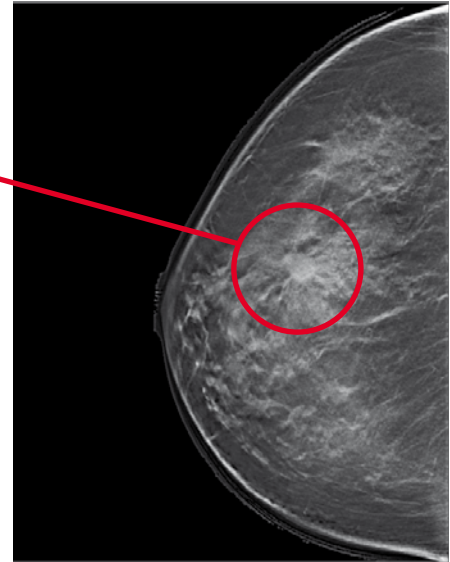
Sharper outlines and no blurring

# EXCELLENCE IN IMAGE QUALITY... FROM 2D TO 3D...

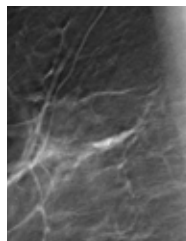
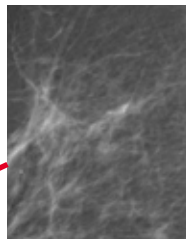
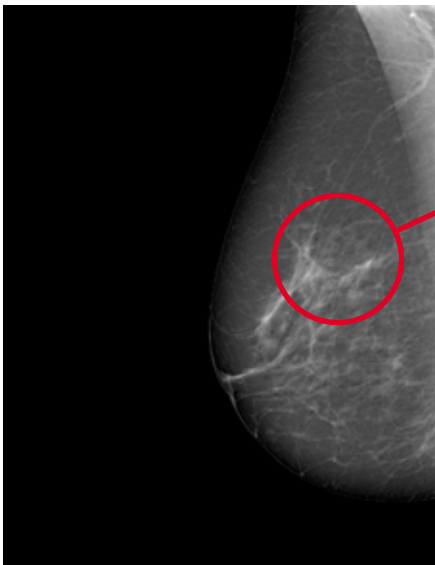
Digital mammography hardly reveals a parenchymal distortion, not clearly identified with the magnification



The same breast analyzed with Tomosynthesis gives an improvement in detection and in lesion's characterization



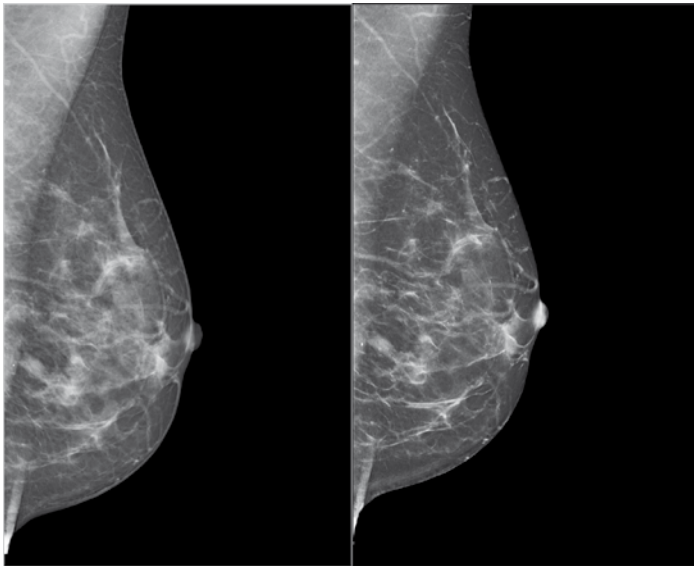
2D Mammograph: suspicious microcalcifications are barely visible



Tomosynthesis: the overall visibility is considerably improved

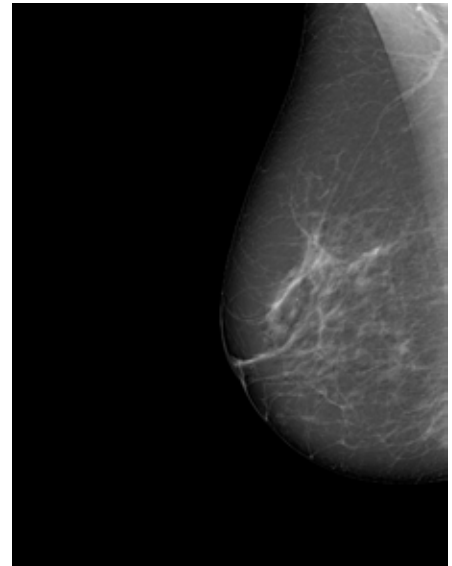


## ... AND FROM 3D TO 2D



Conventional 2D FFDM

Synthesized image from tomosynthesis



Synthetic Image G-VIEW

### G-VIEW SYNTHETIC IMAGE: FROM 3D TO 2D

G-VIEW Synthetic generates an image without the need of an extra exposure, drastically reducing the dose and the compression time. Images can be reviewed after the tomosynthesis exposure in just a few seconds.







# HIGHEST ACHIEVABLE COMFORT

## ERGONOMICS NEVER SEEN BEFORE

- Tomosynthesis and 2D mammography at 360° in upright or tilted position
- VIOLA DBT takes advantage from the gravity effect to view retromammary tissue more easily
- All movements are automatic and programmable
- Rapid and easy in every screening and clinical condition
- Tilting is possible in every direction, even toward the patient

**VIOLA DBT brings to the highest level of patient comfort and muscle relaxation**

# EXCELLENCE IN VERSATILITY

POSSIBILITY TO WORK IN TOMOSYNTHESIS, STEREO OR COMBINED MODE

## A SOLUTION FOR ALL IMAGING CHALLENGES INCLUDING PRONE BIOPSY

- VIOLA DBT can be quickly transformed into a **dedicated unit for biopsy** with the patient in prone position
- Thanks to a dedicated table, the patient can be positioned and the breast quickly centered to start the biopsy procedure with the **highest degree of comfort** both for the patient and the operator
- Maximum accessibility and work area for the operator: **360° access**
- **Fast and intuitive software**
- **Compatibility** with every biopsy system on the market



# INTERVENTIONAL MAMMOGRAPHY PRONE BIOPSY TABLE

- Can be either connected or used with batteries
- Vertical range of 800 mm
- Motorized adjustment of the backrest from 45° to the horizontal position
- Remote control of the upright movement and the backrest position
- Adjustable breast aperture with diameter of 250 mm + 100 mm in all directions
- Side protection guard rails
- Pair of wheels
- Extension support for all types of patient
- Left and right steps





# STEREOTACTIC, TOMOSYNTHESIS OR COMBINED BIOPSY

- Interchangeable guides for compatibility with all types of biopsy drivers
- Motorized and/ or manual compression system with handles
- Touch screen control panel on both sides of the compression arm on the AWS station



# DETAILS THAT MAKE THE DIFFERENCE



## CONTROL PANELS:

Easily reached by the operator, located on both sides of the unit and the x-ray tube. These controls enable all movements or activation of the programmed sequence



## TOUCHSCREEN DISPLAYS:

Located on both sides of the compressor's base, allow an easy consultation in each moment



## DATA SHOWN:

Compressor force, compressed breast thickness, rotation and inclination of the tube-detector





## AWS: ACQUISITION WORKSTATION

Extremely intuitive for the operator

Equipped with a clinical screen for images' displaying and with a second versatile touchscreen where all unit's parameters can be easily checked and managed

The MOBILE AWS mounted on wheels always allows the most convenient placement



## GET IN TOUCH

GENERAL MEDICAL MERATE SPA  
Via Partigiani, 25  
24068 SERIATE (BG) - Italy

Phone +39 035 45 25 311  
Fax +39 035 29 77 87  
[info@gmmspa.com](mailto:info@gmmspa.com)

[www.gmmspa.com](http://www.gmmspa.com)

